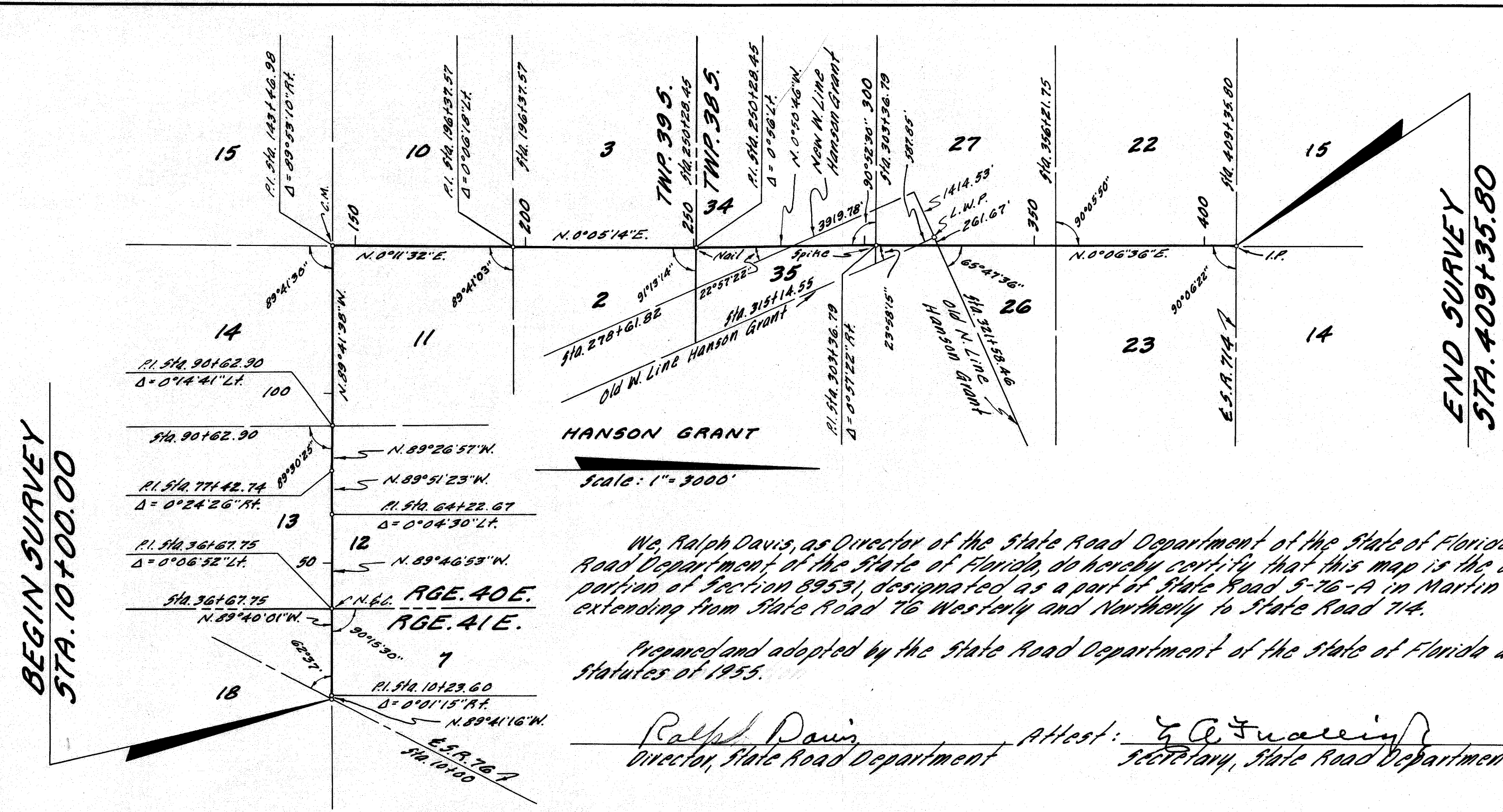


70267

3-110



END SURVEY
STA. 409+35.80

FILED & RECORDED
IN MARTIN COUNTY, FLA.
1959 JUN 30 AM 11:00
GEOFFREY PIERCE, CLERK

L. J. Evans
Filed for record in the Office
of the Clerk of the Circuit Court
for the County of Martin, State
of Florida, in Map Book 3
Page 116, on the 30th
day of June, A.D. 1959.

Dorothy Price
Clerk of the Circuit Court
Martin County, Florida

We, Ralph Davis, as Director of the State Road Department of the State of Florida, and L. A. Fraleigh, as Secretary of the State Road Department of the State of Florida, do hereby certify that this map is the Official Map of Location and Survey of a portion of Section 89531, designated as a part of State Road 5-76-A in Martin County, Florida; said portion of Section 89531 extending from State Road 76 Westwardly and Northwardly to State Road 714.

Prepared and adopted by the State Road Department of the State of Florida under provisions of Section 335.02, Florida Statutes of 1955.

Ralph Davis
Director, State Road Department

Attest: *L. A. Fraleigh*
Secretary, State Road Department

Approved: *[Signature]*
Engineer of Rights of Way

Date: June 18, 1959

Section 89531

Rd. 5-76-A

Martin Co.

M.C.S.